

RPA-2

Robot Powder Applicator

The RPA-2 Robot Powder Applicator is Ransburg's newest, most technically advanced powder applicator specifically designed for automotive exterior and cut-in applications.

It provides bell-like performance features including uniform film build and high transfer efficiency but is a powder gun with unique benefits and added system flexibility. With its built-in proprietary engineering, the RPA-2 produces a larger spray pattern than any other powder gun. Plus it delivers twice the coating capacity – coating more square feet per minute – than any other powder gun or bell.

The RPA-2 improves productivity due to a simplified design eliminating rotating parts. It enhances the bottom line by increasing powder line capacity and reducing maintenance costs.

FEATURES

Expanded spray pattern: doubles the coating capacity available with any other gun nozzle or bell.

Simplifies automation controls: only requires three air lines.

Reduces overall system cost: high powder flow capacity allows for the reduction of the number of robot atomizers.

Delivers uniform film build: even powder concentration across the spray pattern reduces film thickness variance enhancing part-to-part consistency and optimizes powder usage.

Superior transfer efficiency: the applicator's nozzle design promotes better powder charging resulting in increased transfer efficiencies – especially at high powder output.

Quick Disconnect: RPA-2 improves productivity with rapid robot disconnect for fast, easy maintenance or repair.

Specifications

Application tip speeds*	500 mm per sec. continuously
Powder flow capacity*	up to 800 grams per min. (dense phase delivery system) 300 grams per min. (venturi system)
Nominal output voltage	100 kV
Max. output current	140 uA
Polarity	Negative
Weight	6.6 lbs.
Tool center point	15.6"/6.4" (2.9 kg) (X,Y) (39.62 cm/16.2 cm)
High voltage generation	integrated HP-505 cascade
Shaping air	0-3.5 SCFM
Atomizing air*	0-3.5 SCFM
Electrode rinsing air	0-3.5 SCFM
Cascade air	.3-.6 SCFM

*with typical dense phase delivery system.

Typical film builds up to 3 mil are easily achieved.

Sprays like a “bell-type” atomizer with its bell-like pattern for uniform consistency and superior atomization.

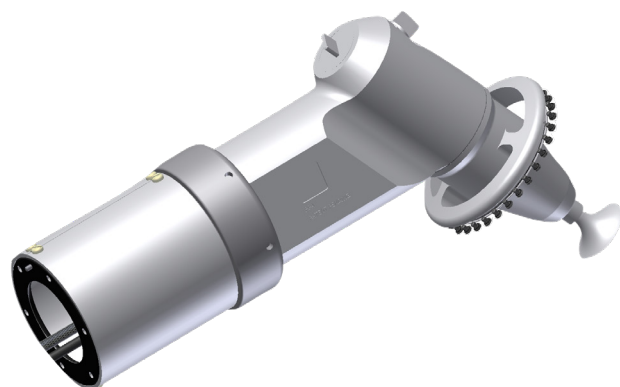
Delivers excellent pattern and atomization for flat surfaces as well as “cut-ins.”

Advanced nozzle design provides high transfer efficiency and uniform film build.

Minimal installation time compared to other “bell-type” powder applicators.

Mean time to repair is less than 15 minutes.

Quick replacement and/or removal of applicator reduces downtime.



The RPA-2 integrates “bell-type” pattern technology to optimize film uniformity. Its cloud achieves a bell-similar spray pattern combined with the dynamic powder/air flow.

Let's start a conversation

We want to work together to help answer your application challenges. To learn more about what we can offer, visit our website at **Carlisleleft.com** or call us today.



youtube.com/CarlisleFluidTechnologiesGlobal



@CarlisleFT



linkedin.com/company/carlisle-fluid-technologies



North America
EMEA
China
Japan

1.800.992.4657
44.0.1202.571111
86.21.33730108
81.45.785.6421

marketing@carlisleleft.com
marketing-uk@carlisleleft.com
mkt_cn@carlisleleft.com
jp-rans-tokyosales@carlisleleft.com

